



HONDA CRF1000L Pannier Racks

Installation Guide

A qualified, experienced motorcycle technician should install Rockfox products. If you are unsure of your ability to properly install a product, please have the product installed by your local motorcycle dealer. Rockfox takes no responsibility for damages caused by improper installation. All screws, bolts and nuts, including all replacement hardware provided by Rockfox, should be tightened to the torque specified in the OEM maintenance manual for your motorcycle. If no torque specifications are provided in the OEM maintenance manual, the following torques may be used: M6 – 9,6Nm; M8 – 23Nm; M10 – 46Nm. All screws, bolts and nuts should be checked after driving the first 50 km to ensure that all are tightened to the proper torque. Medium strength liquid thread-locker (i.e., "Loctite") should be used to secure all screws bolts and nuts.

Contents:

- 1 x Left Side Rack
- 1 x Right Side Rack
- 1 x Rear Brace
- 1 x Left Bracket
- 1 x Right Bracket
- 1 x Pack of Bolts

Right Side

Step 1



Remove the rear footpegs

Step 2



Hook the pannier rack into the slots in the rear carrier rack.

Step 3



Using the standard bolts re-mount the rear footpegs. Place the thin spacer at the back and the thicker spacer in the front. But do not tighten the bolts, just nip them. (The washers are not re-used)

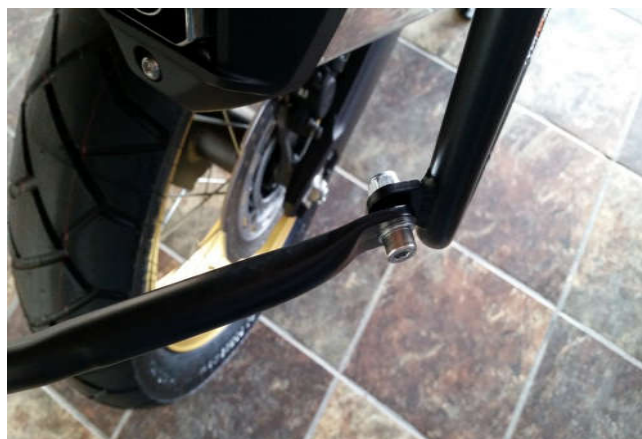
Step 4



Fit the clamp into the lower slot beneath the rear panels. **(THIS STEP MIGHT REQUIRE SOME FORCE)** to get the bolts to line up correctly as this will clamp the pannier rack onto the bike.

Repeat Steps 1 through 4 for the left hand side.

Step 5



Attach the rear brace to both racks.

Step 7

Tighten all bolts.

Final product



Please contact us if you encounter any problems

Regards
The Rockfox Team