



## BMW G310 GS Crashbar

### Installation Guide

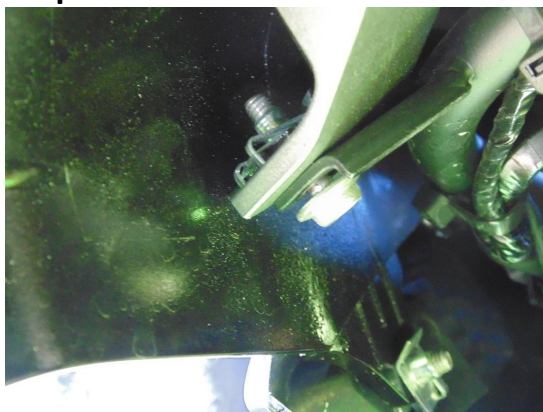
A qualified, experienced motorcycle technician should install Rockfox products. If you are unsure of your ability to properly install a product, please have the product installed by your local motorcycle dealer. Rockfox takes no responsibility for damages caused by improper installation. All screws, bolts and nuts, including all replacement hardware provided by Rockfox, should be tightened to the torque specified in the OEM maintenance manual for your motorcycle. If no torque specifications are provided in the OEM maintenance manual, the following torques may be used: M6 – 9,6Nm; M8 –23Nm; M10 – 46Nm. All screws, bolts and nuts should be checked after driving the first 50 km to ensure that all are tightened to the proper torque. Medium strength liquid thread-locker (i.e., "Locktite") should be used to secure all screws bolts and nuts.

Tools required: Nr 5 Allen key  
Nr 6 Allen key  
Nr 8 Allen Key

Contents: 1 x Left Side Crashbar  
1 x Right Side Crashbar  
1 x Cross Bar  
1 x 20x22x11 Aluminium Spacer  
1 x 20x5x11 Aluminium Spacer  
3 x M8x20 Bolt  
3 x M8 Washers  
1 x M10x50 Bolt  
1 x M10x40 Bolt  
2 x M10 Washers

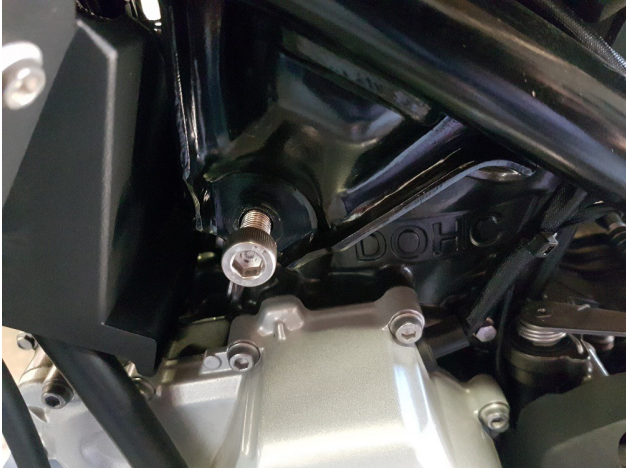
#### Left Side

##### Step 1



Remove the top bolt. It is situated just below the mudguard underneath the headlight.

## Step 2



Remove the left hand engine bolt.

## Step 3



Fix the crashbar to the top bracket using the OEM bolt that was removed.

Do not tighten fully

## Step 4



Fit the crashbars to the engine mount using the newly supplied longer M10 bolt and the Long spacer.

Do not tighten fully

### Step 5



Insert the M8x20 bolt and 1 washer to the lower left hand side of the crashbar.

Do not tighten fully

### Step 6



Insert the crossbar into the crashbar as pictured. Insert the grub screw and tighten slightly.

Note: The grub screws pinch the bar and do not enter any holes or threads in the bar

**Repeat Step 1, 2, 3, 5 and 6 for the right hand side.**



Using the 5mm Spacer



**Once all bolts have been inserted and nipped you may proceed to tightening the bolts.**

## Final product



Please contact us if any problems occur or if bars are difficult to fit.

Regards  
The Rockfox Team