



Honda CB500X / NX500 Bashplate

Installation Guide

A qualified, experienced motorcycle technician should install Rockfox products. If you are unsure of your ability to properly install a product, please have the product installed by your local motorcycle dealer. Rockfox takes no responsibility for damages caused by improper installation. All screws, bolts and nuts, including all replacement hardware provided by Rockfox, should be tightened to the torque specified in the OEM maintenance manual for your motorcycle. If no torque specifications are provided in the OEM maintenance manual, the following torques may be used: M6 – 9,6Nm; M8 – 23Nm; M10 – 46Nm. All screws, bolts and nuts should be checked after driving the first 50 km to ensure that all are tightened to the proper torque. Medium strength liquid thread-locker (i.e., "Loctite") should be used to secure all screws bolts and nuts.

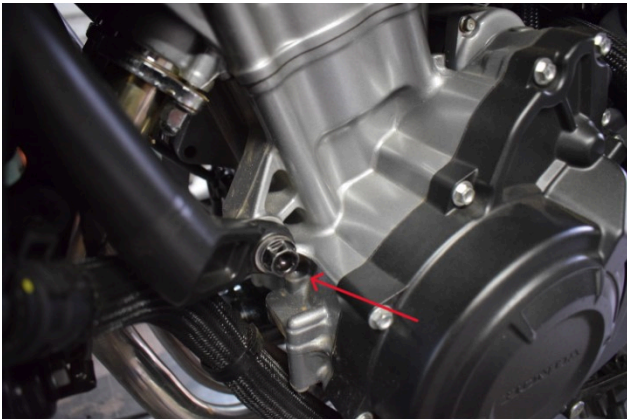
Tools required:

Contents: 1 x Bashplate
1 x Bolt Pack

Please note do not remove both sides of the bolts. do one side at a time.

Left Side

Step 1



Remove the indicated bolt.

Step 2



Fit the long bracket using the 20x4x11 spacer supplied and then refit the bolt, tighten until the bracket can just still move.

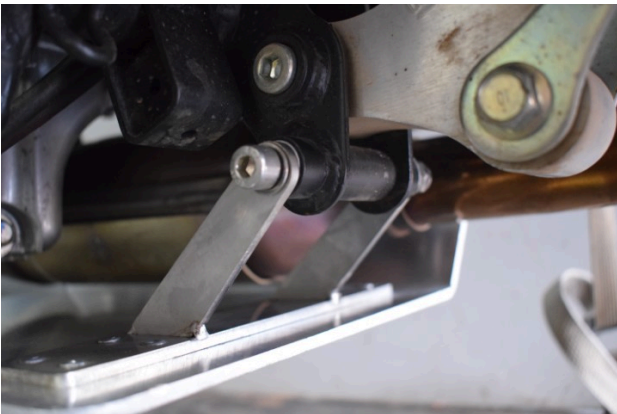
Repeat on the Right side.

Step 3



Insert the 16x78x9 spacer into the bracket on the motorcycle just below the rear shock dog bracket

Step 4



Fit the rear of the bashplate to the bracket using the supplied bolt.

Step 5



Attach the front of the bashplate to the brackets using the supplied bolts.

Tighten all bolts.
Final product



Please contact us if any problems occur or if bars are difficult to fit.

Regards
The Rockfox Team